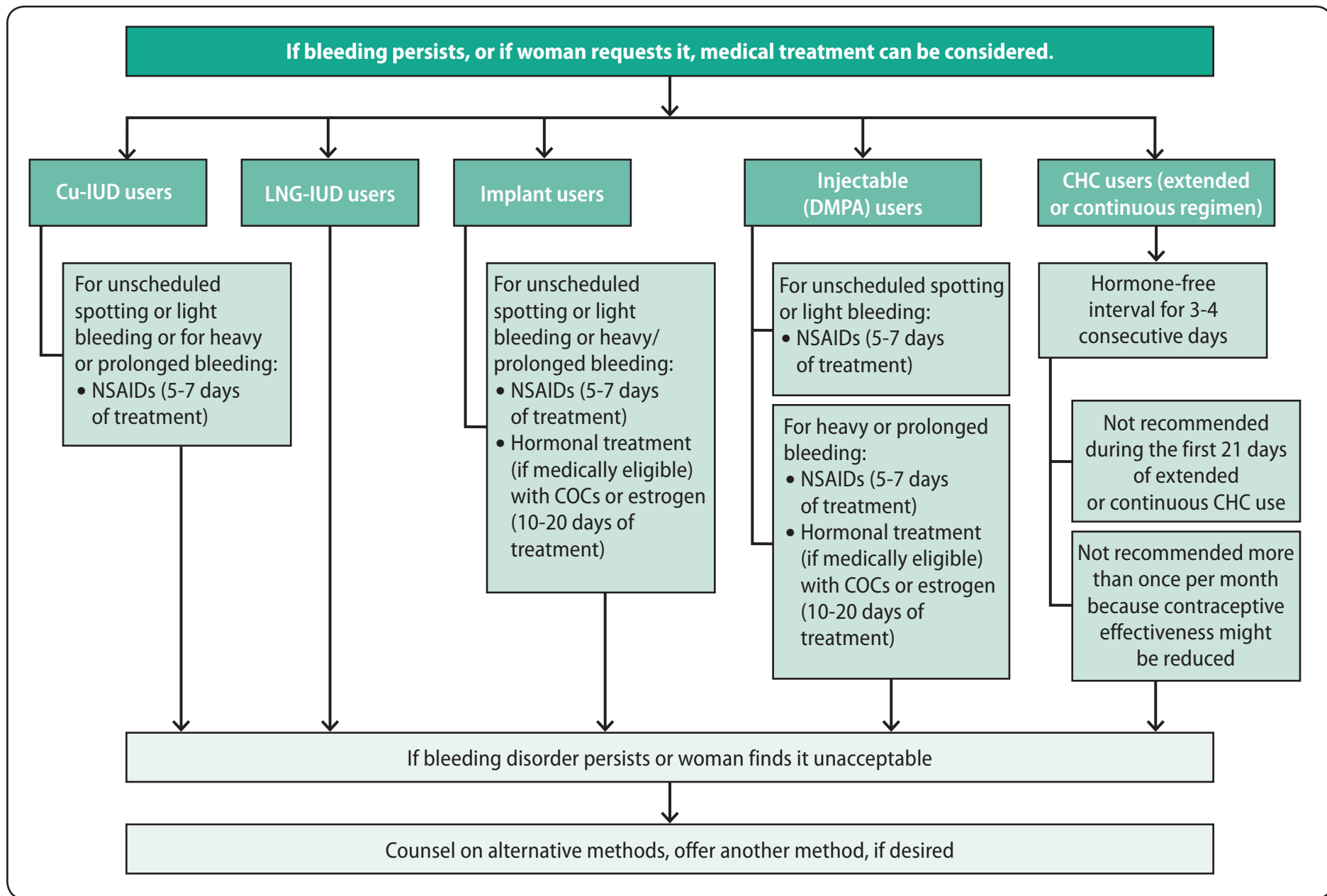


Management of Women with Bleeding Irregularities While Using Contraception*



* If clinically warranted, evaluate for underlying condition. Treat the condition or refer for care. Heavy or prolonged bleeding, either unscheduled or menstrual, is uncommon among LNG-IUD users and implant users.

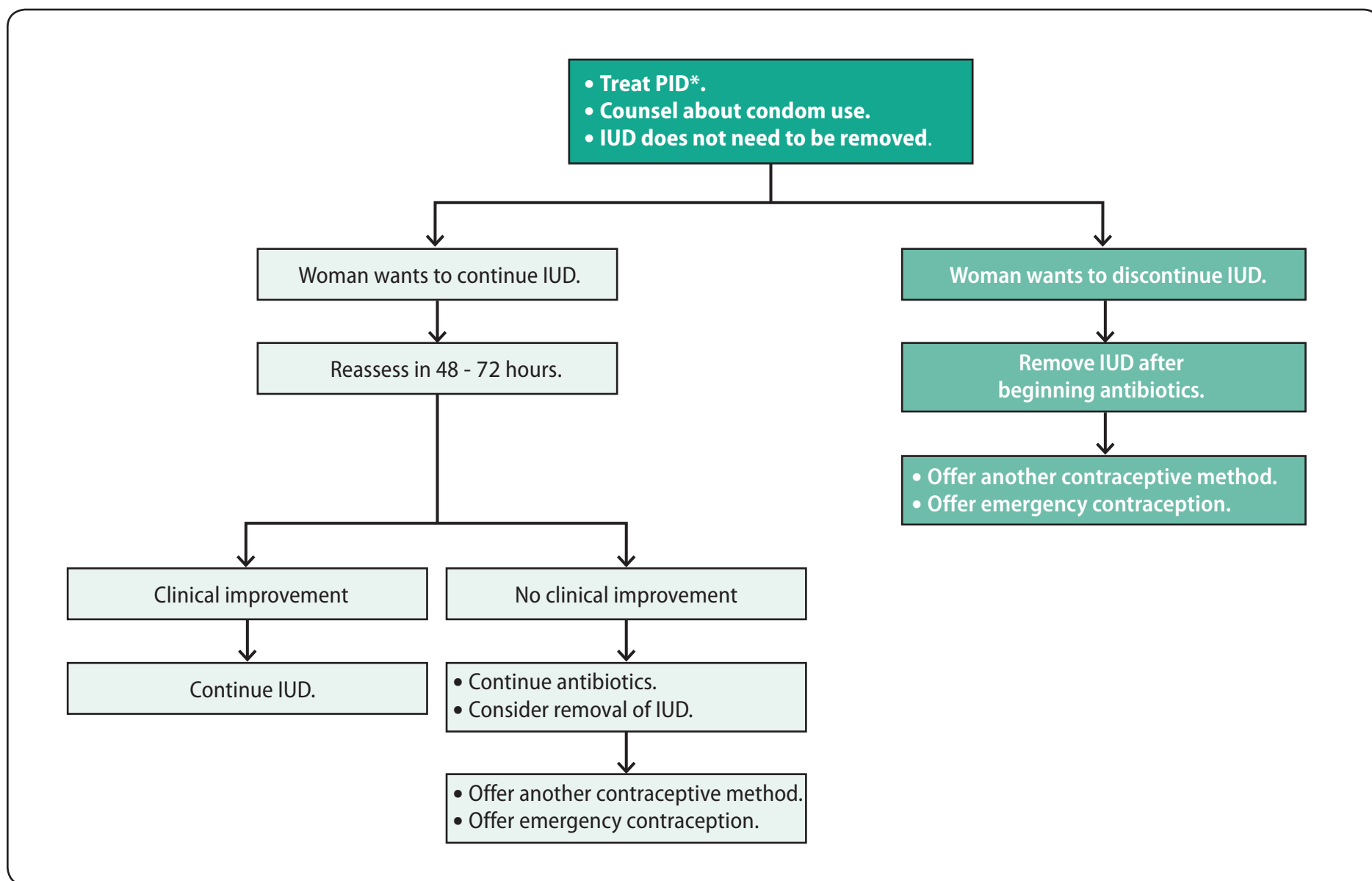
Abbreviations: CHC = combined hormonal contraceptive; COC = combined oral contraceptive; Cu-IUD = copper-containing intrauterine device; DMPA = depot medroxyprogesterone acetate; LNG-IUD = levonorgestrel-releasing intrauterine device; NSAIDs = nonsteroidal anti-inflammatory drugs.

Source: For full recommendations and updates, see the U.S. Selected Practice Recommendations for Contraceptive Use webpage at <http://www.cdc.gov/reproductivehealth/unintendedpregnancy/usspr.htm>.



Centers for Disease
Control and Prevention
National Center for Chronic
Disease Prevention and
Health Promotion

Management of the IUD When a Cu-IUD or an LNG-IUD User is Found to Have Pelvic Inflammatory Disease



Abbreviations: Cu-IUD = copper-containing intrauterine device; IUD = intrauterine device; LNG-IUD = levonorgestrel-releasing intrauterine device; PID = pelvic inflammatory disease

*Treat according to the CDC *Sexually Transmitted Diseases Treatment Guidelines* (available at <http://www.cdc.gov/std/treatment>).

Source: For full recommendations and updates, see the U.S. Selected Practice Recommendations for Contraceptive Use webpage at <http://www.cdc.gov/reproductivehealth/unintendedpregnancy/usspr.htm>.